

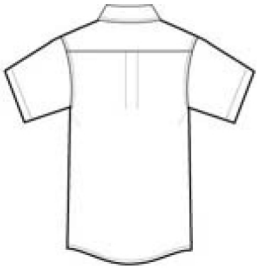


This comfortable wash-and-wear shirt is indispensable for the workday. Wrinkle resistance makes this shirt a cut above the competition so you and your staff can be, too.

- 4.5-ounce, 55/45 cotton/poly
- Button-down collar
- Dyed-to-match buttons
- Left chest pocket
- Box back pleat
- White, Athletic Gold, Texas Orange, Burgundy, Coffee Bean, Light Blue, Navy, Classic Navy, Steel Grey, Purple and Black have a Light Stone contrast neckband.
- Light Stone and Royal have a Classic Navy contrast neckband.
- Dark Green has a Navy contrast neckband.



front

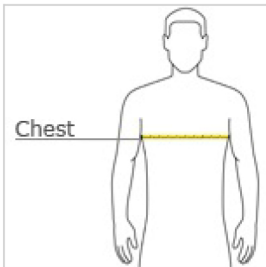


back

CARE INSTRUCTIONS

Machine wash warm with like colors. Do not bleach. Tumble dry low. Warm iron if necessary.

HOW TO MEASURE



CHEST
With arms down at sides, measure around the upper body, under arms and over the fullest part of the chest.

SIZE CHART

	XS	S	M	L	XL	2XL	3XL	4XL	5XL	6XL
Chest	32-34	35-37	38-40	41-43	44-46	47-49	50-53	54-57	58-60	61-63
Neck	14 1/2 - 15	15 - 15 1/2	15 1/2 - 16	16 - 16 1/2	16 1/2 - 17	17 - 17 1/2	17 1/2 - 18	18 - 18 1/2	18 1/2 - 19	19 - 19 1/2

COLOR INFORMATION

Athletic Gold/Light Stone	Bark PMS 405 C	Black/Light Stone PMS NTR BLACK	Bright Lavender PMS 2635 C	Burgundy/Light Stone PMS 505 C	Classic Navy/Light Stone	Clover Green PMS NO MATCH	Coffee Bean/Light Stone	Court Green PMS 7724 C	Dark Green/Navy PMS 5467 C	Light Blue/Light Stone PMS 644 C
Light Stone/Classic Navy	Maui Blue PMS 7709 C	Mediterranean Blue PMS 7673 C	Navy/Light Stone PMS 533 C	Purple/Light Stone PMS 669 C	Royal/Classic Navy PMS 7687 C	Steel Grey/Light Stone PMS 425 C	Strong Blue PMS 7462 C	Teal Green PMS 7715 C	Texas Orange/Light Stone PMS 7583 C	
Ultramarine Blue PMS 7682 C	White/Light Stone	Yellow PMS 1345 C								